

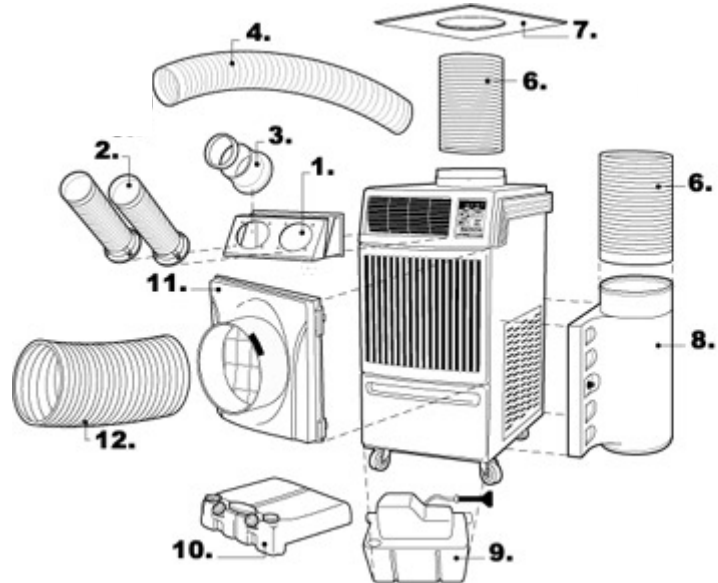


1-21 Grenfell Crescent
 Ottawa, Ontario K2G 0G3
 Phone: 613-723-0359
 Fax: 613-226-4892
 Toll Free: 1-888-279-2505
 Email: sales@digelair.com
 Web: www.digelair.com

Model: OFFICE PRO 60

SPECIFICATIONS:

Cooling Capacity = 59500 BTU, 1940 CFM evap. fan, 2830 CFM cond. fan
 Operating Conditions, inlet air = min 65°F max 105°F @ 50% RH
 Electrical Requirements = 208-230/1/60 volts, 33 A, requires 50 amp breaker, 6-50 plug
 Unit Weight = 625 lbs. (shipping 755 lbs.)
 Unit Dimensions = 30" W x 52" D x 64" H
 Minimum room temperature set point = 65°



No.	Part Name	Office Pro 60 - OPTIONAL ACCESSORY Part Description	Part Number
1.	Nozzle Adapter (6")	Four-piece metal frame converts airflow from louvers to 6" nozzles or cold air ducts. Includes mounting screws. (Nozzles and ducts sold separately.)	LAY45770-0070 (6")
	Duct Adapter (8")	Same as above (including flanges Item #3), but for use with 8" cold air flexible ducts.	LAY45770-0080 (8")
2.	Cold Air Nozzle	6" diameter white plastic nozzle that extends up to 3-1/2' in length. Includes flange, mounting screws and trim ring. Quantity 2 are required for this model.	484209-0050 (6")
4.	Cold Air Flexible Duct	8" diameter wire-reinforced, accordion-style duct in 25' lengths, use with Duct Adapter Kit (#1, LAY45770-0080).	LAY45810-0080 (8")
6.	Condenser Flexible Duct	16" diameter x 25' long vinyl wire-reinforced, accordion-style duct for condenser exhaust or intake (requires Cds. Intake Air Plenum option, Item #8). Includes clamp.	LAY45820-0010
7.	Ceiling Tile Duct Adapter	24" x 24" white tile with flange for 16" round condenser air exhaust and intake ducts.	MOV-PANEL24X16
8.	Condenser Intake Air Plenum	White plastic plenum for return air to condenser. Hinged for filter cleaning. 16" duct.	LAY84270-0060
9.	Automatic Condensate Pump	Included as standard feature with this model. (Drain storage tank is optional.)	NA
10.	Condensate Tank and required Condensate Float (not shown)	Drain tank storage for condensation. Requires condensate float, sold separately. Controls water level in condensate tanks.	484730-0010
			484460-0010
11.	Evaporator Intake Air Plenum	White plastic plenum for return air to evaporator. Use with 16" round duct, Item #12.	LAY84270-0070
12.	Evaporator Intake Duct	Same as Item #6 above. Use with Evaporator Intake Air Plenum (#11).	LAY45820-0010