

MOVINCOOL®

Pioneering New Solutions With Portable Air-Conditioning



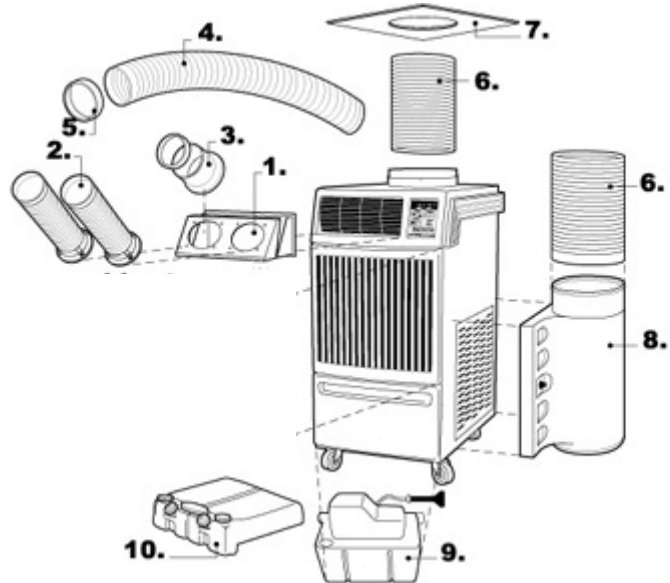
DigelAir
HVAC SUPPLY

1-21 Grenfell Crescent
Ottawa, Ontario K2G 0G3
Phone: 613-723-0359
Fax: 613-226-4892
Toll Free: 1-888-279-2505
Email: sales@digelair.com
Web: www.digelair.com

Model: OFFICE PRO 18

SPECIFICATIONS:

Cooling Capacity = 16800 BTU, 540 CFM evap. fan, 820 CFM cond. fan
Operating Conditions, inlet air = min 65°F max 95°F @ 50% RH
Electrical Requirements = 115/1/60 volts, 15.6 A, requires 20 amp breaker, 5-20 plug
Unit Weight = 177 lbs. (shipping 207 lbs.)
Unit Dimensions = 21" W x 27" D x 44"
Minimum room temperature set point = 65°



No.	Part Name	Office Pro 18 - OPTIONAL ACCESSORY Part Description	Part Number
1.	Cold Air Nozzle Adapter	Two-piece metal frame converts airflow from louvers to nozzles or cold air ducts. Includes mounting screws. (Nozzles and ducts sold separately.)	LA481769-0170
2.	Cold Air Nozzle Kit	5" diameter white plastic nozzle that extends up to 3-1/2' in length. Includes flange, mounting screws and trim ring. (Quantity 2 required for this unit.)	484209-0060
3.	Cold Air Flange	5" diameter white metal flange with wire clamp and mounting screws. Use with cold air ducts. Required for extension cold air flex ducts, Item #4 (either duct type).	481170-0180
4.	Cold Air Self-Supported Duct Insulated Cold Air Flex Duct	5" adjustable diameter, white PVC duct that extends from 6-1/2' to 10' in length. 5" insulated flex duct for ducting of evaporator air. Requires Item #3.	481744-0090 Field Supplied
5.	Trim Ring	Trim ring for Cold Air Self-supported Duct (481744-0090).	481851-0200
6.	Condenser Air Duct (12")	12" diameter x 10' long vinyl wire-reinforced, accordion-style duct for condenser air exhaust and intake (requires Cds. Intake Air Plenum option, Item #8). With clamp.	LAY45771-0060
7.	Ceiling Tile Duct Adapter	24" x 24" metal panel with 12" flange for condenser air exhaust / intake duct.	MOV-PANEL24X12
8.	Condenser Intake Air Plenum	White plastic plenum for return air to condenser. Hinged for filter cleaning.	LAY84270-008A
9.	Automatic Condensate Pump	120V pump kit includes 3/8" diameter x 20' length clear vinyl hose and installation hardware.	MOV-PUMPKIT120
10.	Condensate Tank	Drain tank storage for condensation. Included as standard with this model. Includes auto shut-off when tank is full to prevent water over-flow.	N/A