

MOVINCOOL®

Pioneering New Solutions With Portable Air-Conditioning



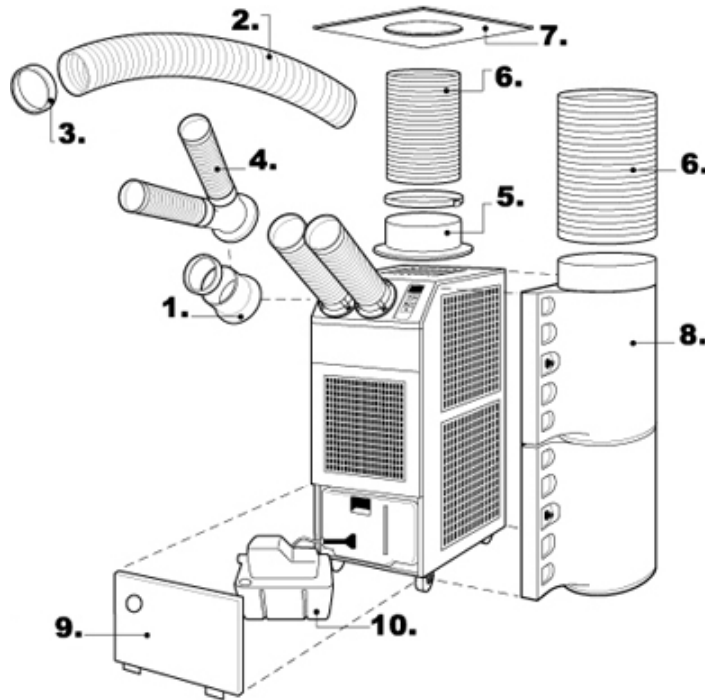
DigelAir
HVAC SUPPLY

1-21 Grenfell Crescent
Ottawa, Ontario K2G 0G3
Phone: 613-723-0359
Fax: 613-226-4892
Toll Free: 1-888-279-2505
Email: sales@digelair.com
Web: www.digelair.com

Model: CLASSIC PLUS 26

SPECIFICATIONS:

Cooling Capacity = 24000 BTU, 708 CFM evap. fan, 1680 CFM cond. fan
Operating Conditions, inlet air = min 70°F max 113°F @ 50% RH
Electrical Requirements = 208-230/1/60 volts, 15.6 A, requires 20 amp breaker, L6-20 plug
Unit Weight = 235 lbs. (shipping 265 lbs.)
Unit Dimensions = 19" W x 29" D x 47" Minimum room temperature set point = 70°F



No.	Part Name	Classic Plus 26 - Part Description	Part Number
1.	Cold Air Flange	6" diameter white metal flange with wire clamp and mounting screws.	481170-0250
2.	Cold Air Extension Duct	6" diameter white plastic duct that extends from 6 1/2' to 10' in length.	481744-0030
3.	Trim Ring	6" diameter black plastic ring mounts as end caps for extension ducts.	481851-0210
4.	Y-Nozzle Adapter	Not Available for this model.	NA
5.	Warm Air Flange	12" adjustable diameter white plastic duct that extends from 6 1/2' to 10' in length.	481170-0190
6.	Warm Air Duct	12" adjustable diameter white plastic duct that extends from 6 1/2' to 10' in length.	481744-0060
7.	Ceiling Tile	24" x 24" white tile with 12" hole for warm air duct.	LA146373-8280
8.	Air Plenum	White plastic plenum, hinged for filter cleaning.	LAY84270-0030
9.	Cover Plate	Blue metal plate covers condensate collection area.	484009-0480
10.	Condensate Pump Kit	220V pump kit includes 3/8" diameter x 20' length hose and installation hardware.	CPK4